



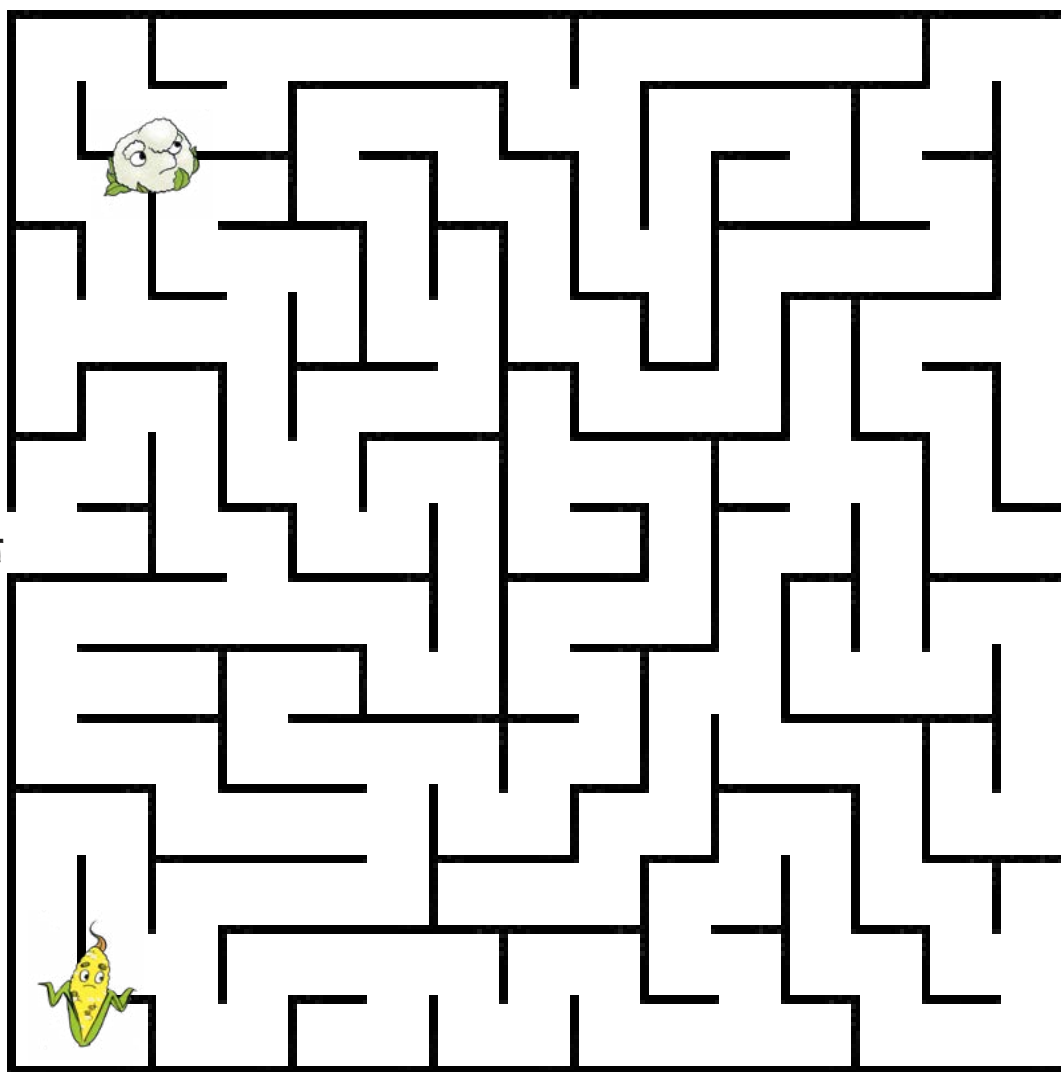
FIND YOUR WAY THROUGH THE MAZE



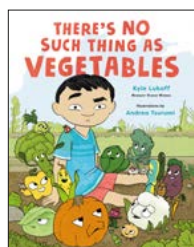
Chester's mom has asked him to pick up some Brussels sprouts, but the community garden is a maze! Can you help Chester find the Brussels sprouts?



START



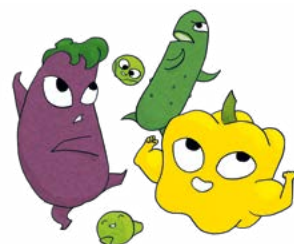
FINISH



THERE'S NO SUCH THING AS VEGETABLES

By Kyle Lukoff | Illustrations by Andrea Tsurumi

H An imprint of Macmillan Children's Publishing Group





WORD SEARCH



There are so many plants that get put in the category of “vegetable,” it’s hard to keep track of how many there are! See if you can find the names of common vegetables in the word search below. Have you tried them all? Which ones are your favorites?

W K R F K L T Q R T U R N I P R X Y
M B R U S S E L S S P R O U T S U I
C H A R D B T A C Q W Q X Z J M M C
T M R U A N R O R U L E T T U C E A
B T B F Y D W O M T C T V K C P P R
W W J G I D I M C A I U I D O E E R
P A R S N I P S Y C T C M X R A P O
K A L E N X S Y H T O O H B N S P T
C A U L I F L O W E R L Z O E X E G
K P O T A T O J C I N A I M K R R Z
K X D B E G G P L A N T O J M E T U
B Z Q M O N I O N P U M P K I N C G

ARTICHOKE

BROCCOLI

BRUSSELS SPROUTS

CARROT

CAULIFLOWER

CHARD

CORN

CUCUMBER

EGGPLANT

KALE

LETTUCE

ONION

PARSNIP

PEAS

PEPPER

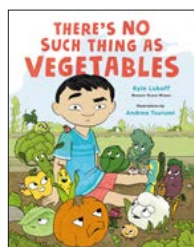
POTATO

PUMPKIN

RADISH

TOMATO

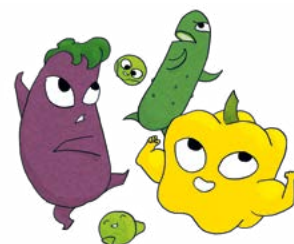
TURNIP



THERE'S NO SUCH THING AS VEGETABLES

By Kyle Lukoff | Illustrations by Andrea Tsurumi

H An imprint of Macmillan Children's Publishing Group

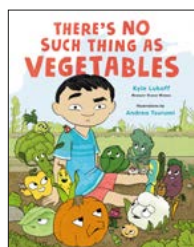
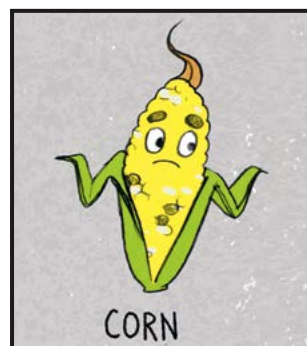
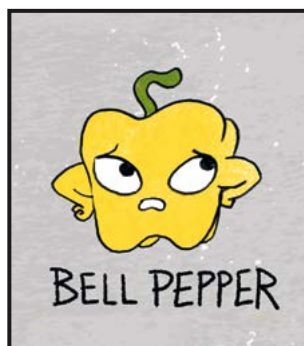
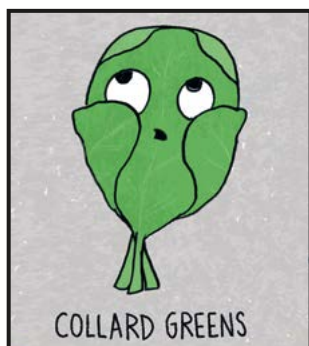
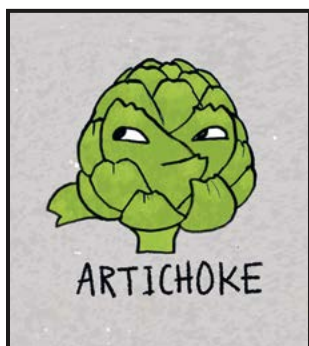
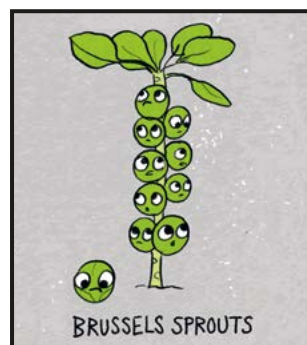
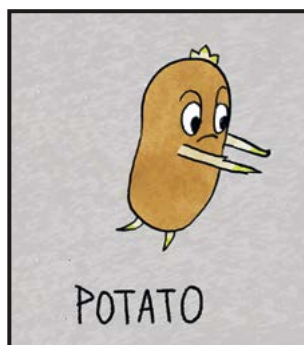
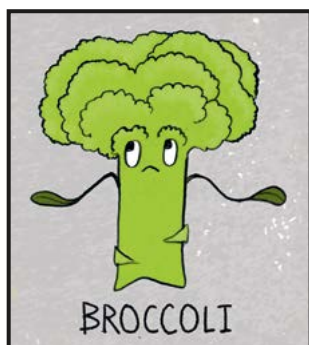
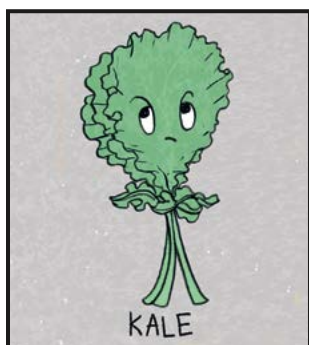
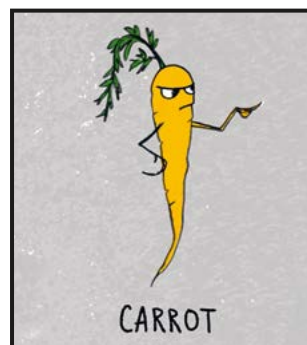




MEMORY GAME



Print out two sets of the cards below and ask a grown up to help you cut them out. Mix up the cards, place them facedown, then turn two cards over. If they match, take another turn. If not, turn them facedown again and the next player gets a turn.



THERE'S NO SUCH THING AS VEGETABLES

By Kyle Lukoff | Illustrations by Andrea Tsurumi

H An imprint of Macmillan Children's Publishing Group

